

## Hard-working, Cost-effective Maintenance Gates. Low-profile gates specifically designed for dry materials.

*The features of Plattco Gates make in-line maintenance quick and easy. As a stand-alone maintenance gate for dry materials -- or in combination with the Double Flap Airlock® Valves -- there is no better product on the market.*

Companies around the world choose Plattco Maintenance Gates when they need a solution that will

- ♦ minimize air leakage and prevent material jams;
- ♦ result in accurate loading and metering;
- ♦ easily handle temperatures of up to 750° F;
- ♦ offer convenient and inexpensive maintenance for decades of "like new" operation; and,
- ♦ fit their specific applications, using Plattco's 50+ years of experience custom engineering gates for facilities all over the world.

### Plattco's Maintenance Gates / U-Series

**Multi-purpose Gates** that can be used as a stand-alone maintenance gate or upstream of Plattco flapgates as part of an integrated high-performance system.

#### Excellence in Design

Cast iron body with stainless steel gate operates in temperatures of 750° F.

Distinct drill pattern so the gate will stay in place if equipment below needs to be removed.

Low-profile design and superior construction allows for easier installation.

Plattco's graphite gate seals with adjustable seal retainers provide a stronger, longer-lasting seal to reduce production downtime.

One-piece cast housing for higher durability and greater dependability.

Pneumatic or handwheel operation options.



Handwheel Operated  
U-Series Gate



# Plattco Corporation

When your process is critical, when conditions are demanding,  
When your valve has to work, it has to be a **Plattco Valve**.

Plattco.com  
email: [info@Plattco.com](mailto:info@Plattco.com)  
international calls: 1.518.563.4640  
USA/domestic calls: 1.800.352.1731  
7 White Street, Plattsburgh NY USA 12901

## U-Series / *Maintenance Gates*

One-piece cast housing

Inlet / Outlet Sizes (inches):  
8, 10, 12

Gate Material:  
Stainless Steel

Housing Material:  
Cast Iron

Distinct drill pattern so gate  
remains in place if equipment  
below needs to be removed.



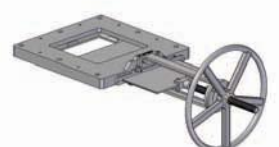
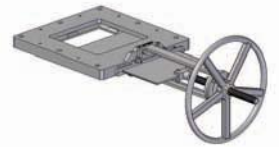
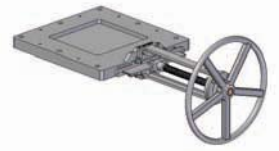
Graphite gate seals  
with adjustable seal  
retainer

Low-profile... can be free  
standing or bolted to the  
valve assembly

Operators: Pneumatic,  
Handwheel

Maximum Material  
Temperature:  
750° F

Maximum Differential Pressure  
(above & below the valve):  
2 psi



# Plattco Corporation

When your process is critical, when conditions are demanding,  
When your valve has to work, it has to be a **Plattco Valve**.